

# **WILLIAMSON CONSTRUCTION EQUIPMENT LIMITED**

**HIRE & SALE  
PRODUCT  
CATALOGUE**

**ISSUE 16**



**[www.wcelimited.co.uk](http://www.wcelimited.co.uk)**

Our company has been supplying non-mechanical building plant and equipment to the UK construction and civil engineering industries since 1985, building an enviable reputation for service and quality. Our highly experienced personnel in both our Newcastle and Carlisle depots aim to provide an efficient, expert service to all customers, large and small.

# **WILLIAMSON CONSTRUCTION EQUIPMENT LIMITED**

We only deal with manufacturers who are able to conform to our high quality requirements so we can guarantee the best equipment, at the right price, when you require it.



If you would like to know more about us, our equipment or our terms and conditions of hire & sale—please contact our Hire and Sales Department

*We will be pleased to quote for any item, which is not included within this catalogue*

# CONTENTS

## FORMWORK

Minima Panel Formwork	3
Rapidshor Soffit Formwork Support	3
Matab Panel Formwork	4
Superslim Soldier Support	4
Thru-Tie Systems	5

## DESIGN SERVICE

Our Design Service	6
--------------------	---

## SUPPORT

Superslim Soldier Systems	7
Superslim Soldier Applications	8
Telescopic Props	9
Push Pull & Tilt Up Props	9
Trench Struts and Lintel Supports	10

## GROUNDWORKS

System 20 Trench Box	11
System 20 Manhole Box	11
Mini Drag Box	12
Manhole Brace	12
Trench Sheeting	13
Trench Shoring Accessories	13
Road Plates & Trench Guards	13
Adjustable Steel & Polypropylene Manhole Shutters	14

## ROAD FORMS

Road Forms	15
K-Form - UPVC Screeding Rail	16
Adjustable Column Clamp	16

## FENCING

Site Fencing	17
Pedestrian Barriers	17

## CONCRETE SPACERS

Concrete Accessories	18
----------------------	----

## MINIMA PANEL FORMWORK



*"Minima is RMD Kwikform's modular wall formwork panel for concrete pressures up to 60kN/m<sup>2</sup>. With an extensive range of accessories, Minima has the versatility to adapt to most building shapes, quickly and easily."*

Rapidshor can be used with Superslim Soldiers primary and Timber/aluminium secondary support beams to allow the construction of in-situ concrete slabs.

*"Rapidshor is a heavy duty galvanised modular steel shoring system with a robust design, ease of assembly, low cost in use and an extensive range of accessories"*



## RAPIDSHOR SOFFIT

# 4

## FORMWORK

Matab Panel Formwork is a small panel formwork system, ideal for forming ground beams, pile caps, columns and small retaining walls.

Curved formwork can also be achieved.

The lightweight panels weigh 30kg/m<sup>2</sup>, allowing them to be easily and safely set by hand.



*Superslim Soldiers are an ideal product for support of traditional plywood faced timber or aluminium beam formwork.*

*Designs can be produced for single and double-sided formwork complete with Superslim Soldier Support. 'Soldiers' can also be used to support Minima and Matab panel Formwork.*

**Contact your local depot for full details of all our formwork Systems  
We can prepare you a quotation and give advice on formwork requirements large and small**

## THRU-TIE SYSTEMS



S-Type  
Water Barrier



Wing  
Nut



Tie-rod  
Connector



Ribbed  
Water Barrier



Mechanical  
Anchor



Hexagon  
Nut



Water  
Wing Nut



Form Anchor  
(Cast-In)



Standard  
Water Plate



Aquaplug  
(22mm & 26mm)



Spacer Cone  
(15mm & 20mm)



Flanged  
Water Barrier



Tie Rod



Weld-on Anchor

Spacer Tube  
(22m & 26mm)





# SUPPORT

# 7

Williamson Construction Equipment utilises the RMD Superslim Soldier System for use in a large array of applications.

This can range from using the Super Slim Soldier as a standard formwork soldier; to a primary support beam for reinforced concrete slabs; to façade retention.

ST JOHN'S CEMETERY, NEWCASTLE



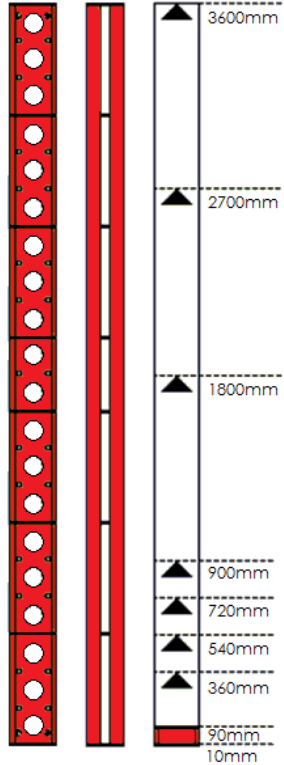
ELSWICK, NEWCASTLE



BOWNESS, WINDERMERE



Sizes of Super Slim Soldier Available:





# 8

## SUPPORT



Superslim Lifting Plate



Superslim Support Plate



Superslim Access Bracket



Superslim Adjustable Prop Jack



Superslim Tilt Plate



Superslim Prop Spade End Link & Pivot Tube



Superslim Adjustable Base Assembly



Superslim Joint Stiffener



Superslim Push Pull Corner Angle



Superslim Pivot Cleat Set

### Also Available:

#### MINISLIM BEAMS

1200mm Minislim Beam  
1800mm Minislim Beam  
2400mm Minislim Beam

A lightweight alternative to the Superslim Soldier. Used for support and wall soldier applications

#### NEEDLE BEAMS

152 × 152 U.C. × 3000mm Long  
152 × 152 U.C. × 2700mm Long  
152 × 152 U.C. × 2400mm Long  
203 × 203 U.C. × 3000mm Long

Used for temporarily supporting a wall while steelwork is inserted

# SUPPORT

# 9

## STANDARD TELESCOPIC PROPS



Adjustable, for temporary support of floors, beams & formwork  
Fitted with 152mm x 152mm 6" x 6" (0.152m x 0.152m) end plates  
and fully conforming to BS 4074:1982

SIZE	CLOSED	OPEN	WEIGHT
No. 0	1.041m (3'5")	1.829m (6'0")	11.28kg
No. 1	1.753m (5'9")	3.124m (10'3")	16.34kg
No. 2	1.981m (6'6")	3.352m (11'0")	17.48kg
No. 3	2.590m (8'6")	3.962m (13'0")	20.20kg
No. 4	3.200m (10'6")	4.876m (16'0")	23.84kg

## STIRRUP HEADS & U-HEADS

For seating of timbers and beams on top of telescopic props.  
Available in the following sizes:

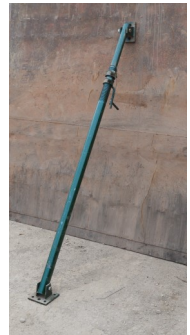


75mm (3")  
100mm (4")  
150mm (6")  
200mm (8")  
225mm (9")

## PUSH PULL & TILT UP PROPS

Supplied with 2 collars, swivel head and base plates attached,  
available in the following sizes:

SIZE	CLOSED	OPEN	WEIGHT
No. 0	1.140m (3'9")	1.829m (6'0")	15.80kg
No. 1	1.850m (6'1")	3.124m (10'3")	23.00kg
No. 2	2.080m (6'10")	3.352m (11'0")	24.00kg
No. 3	2.690m (8'10")	3.962m (13'0")	27.00kg
No. 4	3.300m (10'10")	4.876m (16'0")	31.60kg



# 10

## SUPPORT

### TRENCH STRUTS



Our robust Steel trench struts are available in 4 sizes, giving you a size range from 0.320m (1'1") to 1.730m (5'8").

Adjustable steel trench struts eliminate manual adjustments associated with strutting trenches with timber.

SIZE	CLOSED	OPEN	WEIGHT
No. 0	0.320m (1'1")	0.470m (1'7")	4.00kg
No. 1	0.490m (1'8")	0.730m (2'5")	5.80kg
No. 2	0.690m (2'3")	1.090m (3'7")	7.70kg
No. 3	1.030m (3'5")	1.730m (5'8")	11.00kg

### LINTEL SUPPORTS (SCP STRONGBOY)

*"The Patented Strongboy\* works in conjunction with an Adjustable Steel Prop to provide support to brickwork whilst an opening is refurbished/created."*



*"Due to the Strongboy's robust dynamics it can be fitted between courses on a double skin brick cavity wall from either side to provide a quick, easy and safe temporary support solution. "*

Maximum Loading: 340kg  
Maximum Working Height: 3.00m  
Maximum Spacing: 0.90m

*\*Strongboy is a patented design*

# GROUND WORKS



TRENCH BOX



Base Unit Weight (2m deep)	730 Kg
Top Unit Weight (1m deep)	260 Kg
Length	3000 mm
Safe Working Load	20 kN/m <sup>2</sup>
Clearance between Struts	2650 mm
Clearance below Lower Strut	1200 mm

The System 20 Lightweight Trench Box is designed to safely and effectively support trenches up to 3m in depth. Deeper trenches can be achieved with advice from our technical department. The unique integral post construction allows for various ground conditions and pressures of up to 20 kN/m<sup>2</sup> to be catered for without undue intrusions into the working area.

The System 20 Manhole Box permits rapid and safe construction of manholes. Ideal for manhole excavations where cross services are not encountered and can be handled using a backhoe excavator.

2500mm	Base Unit Weight	851 Kg
	Top Unit Weight	305 Kg
	Internal Clearance	2310 mm
3000mm	Base Unit Weight	972 Kg
	Top Unit Weight	348 Kg
	Internal Clearance	2810 mm
Safe Working Load		20 kN/m <sup>2</sup>
Clearance of Lower Strut		1200 mm

MANHOLE BOX



**Available in two sizes: 2500mm × 2500mm and 3000mm × 3000mm**

# 12

## GROUND WORKS

The Mini Drag Box provides a safe working area for pipe laying operations. The complete unit can be easily handled using on-site machinery, this coupled with the elimination of threaded components and pinned assembly can offer vast site cost savings.

Boxes can be stacked using connecting plates and pins to accommodate deeper excavations. Internal width can be set at 600mm, 800mm and 1000mm

Weight per Drag Box	1350 Kg
Safe Working Load	20 kN/m <sup>2</sup>
Clearance between Struts	2600 mm
Clearance below Lower Strut	950 mm
Depth	2000 mm
Length	3000 mm



MINI DRAG BOX



MANHOLE BRACE

“Jayville” Manhole Braces, used in conjunction with trench sheets, provide excavations from 2.0m<sup>2</sup> to 5.0m<sup>2</sup> with secure and safe support.

Installation of braces from ground level ensures that there is no need for anyone to enter an unsupported excavation.

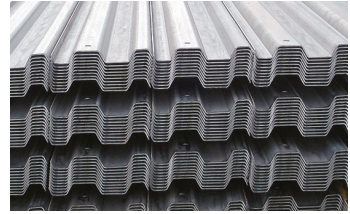
Each set of Manhole Braces are supplied complete with hanging chains and double-acting hydraulic pumps.

Rectangular excavations can be achieved by combining 2 sizes of brace Legs

MANHOLE BRACE	CLOSED (m <sup>2</sup> )	OPEN (m <sup>2</sup> )	FRAME WEIGHT (kg)
Type 'A'	2.0 (6'6")	3.0 (9'10")	1080
Type 'B'	3.0 (9'10")	4.0 (13'1")	1240
Type 'C'	4.0 (13'1")	5.0 (16'4")	1400

## TRENCH SHEETING

We stock standard duty 3.5mm thick trench sheets, for lining trenches and other temporary excavations.



Standard trench sheets are 330mm in width and available in lengths of:

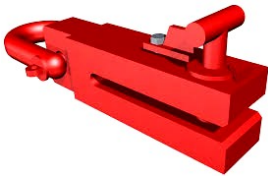
2m      2.5m      3m      3.5m      4m      4.5m      5m

## TRENCH SHORING ACCESSORIES

Lifting Shackles



Lifting Chain



Trench Sheet Extractor

Driving Cap



## ROAD CROSSING PLATES & TRENCH GUARDS

Road Crossing Plates and Trench Guards temporarily cover excavations in footpaths, roadways and groundworks. Road Crossing Plates are also available with an anti-skid coating.

**Dimensions:** 2400mm × 1200mm × 20mm

**Weight:** 550kg



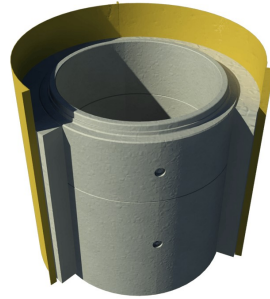
# 14

## GROUND WORKS

### ADJUSTABLE MANHOLE SHUTTERS

Nominal Internal Diameter of Manhole		No. of Panels to give 150mm concrete cover		
		A	B	C
27"	675mm	2	1	
36"	900mm	2	2	
42"	1050mm	3		1
48"	1200mm	3	1	
54"	1350mm	3	2	
60"	1500mm	4		1
72"	1800mm	4	2	
81"	2025mm	5	1	
84"	2100mm	5	1	1
96"	2400mm	6		
108"	2700mm	6	2	

Manhole shutters combine durability with lightweight handling. Available in 1800mm and 900mm heights, to create up to a 2700mm diameter.



Lifting lugs, keys and wedges are supplied attached for ease of use.

### PLASHORE POLYPROPYLENE MANHOLE SHUTTERS

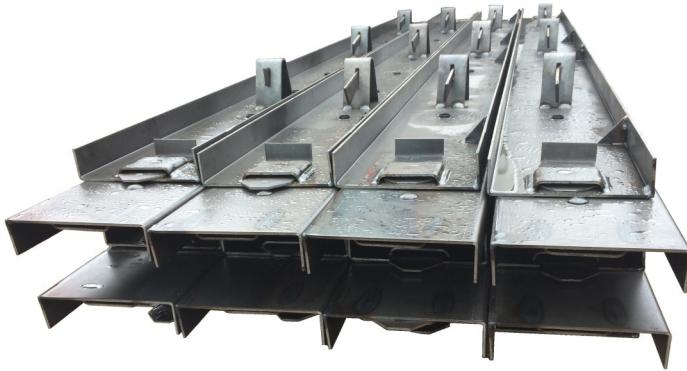
Plashore Polypropylene manhole shutters are lightweight and designed to eliminate cleaning costs from shot-blasting and labour.



Available in 1800mm height only

Nominal Internal dia.	No. of Shutters required to form Manhole	
	Shutter A	Shutter B
675mm	2	1
900mm	1	3
1050mm	3	1
1200mm	1	4
1350mm	3	2
1500mm	5	-
1800mm	5	1
2100mm	5	2
2400mm	5	3
2700mm	5	4

## ROAD FORM SIZES



All Road Forms are available either drilled for dowel bars or plain.

For best results use a chemical release agent.

	DEPTH	LENGTH	WEIGHT
Square Edge Plain/Drilled	100mm (4")	3 metres (10' 0")	20.0 kg
	150mm (6")	3 metres (10' 0")	25.0 kg
	200mm (8")	3 metres (10' 0")	30.0 kg
	300mm (12")	3 metres (10' 0")	41.5 kg
Flexible	100mm (4")	3 metres (10' 0")	12.5 kg
	150mm (6")	3 metres (10' 0")	17.0 kg
	200mm (8")	3 metres (10' 0")	22.0 kg

## ROAD FORM STAKE EXTRACTOR

Stake extractors are a must for all sites using road forms. Any length of stake can be removed quickly and easily.

Stakes are available in the following sizes:  
**450mm**  
**600mm**  
**750mm**  
**900mm**





# 16

## ROAD FORMS

### K-FORM - UPVC SCREEDING RAIL

K-FORM UPVC Screed Railing provides an economical, efficient and environmentally friendly alternative to steel shuttering.



- Designed for concrete slab depth of 100mm to 225mm
  - Enables adjoining bays to be poured consecutively
  - Pre-drilled holes for easy positioning
  - Profile made from UPVC with a built-in expansion joint
  - Profile available in 3 metre rails
  - Saves time and money
  - Easy to use "click together" assembly
  - Once concrete is poured, K-FORM is left in place; no need to remove and clean
- Lightweight; one person can install therefore reducing labour costs

### ADJUSTABLE COLUMN CLAMPS

Used for rapidly and rigidly clamping temporary Formwork for concrete columns and concrete casings to steel stanchions.

Clamps can be set and secured accurately to any dimension.

Column clamps can be used for square, rectangular or polygon sections.



<b>SIZE</b>	<b>MIN. DIMENSION</b>		<b>MAX. DIMENSION</b>		<b>WEIGHT (PER SET)</b>	
	Metric	Imp	Metric	Imp	kg	lbs.
1	228.6mm	9.0"	546.1m	21.5'"	11.34	25.0
2	330.2mm	13.0"	889.0m	35.0"	15.00	33.0
3	596.9mm	23.5"	1270.0m	50.0"	26.54	58.5

SITE FENCING



PEDESTRIAN GATES



Heavy duty, anti-climb, galvanized steel mesh

Supplied with couplers and footings. Optional extras include: Pedestrian and vehicular gates, anti-lift devices and stabilisers.

FOOTINGS



Size	Weight	Mesh Type	Finish
3.5m (L) x 2.5m (H)	16kg	GS7 (Anti-Climb)	Galvanised

FIXED LEG BARRIERS



Strong and durable, with welded tubular feet.

We also stock a number of barriers without feet attached – these can be used in conjunction with anti-trip flat metal feet.



Size	Weight	Bar Dia.	Finish
2.3m (L) x 1.1m (H)	10.66kg	12mm	Galvanised

# 18

## CONCRETE SPACERS

Square Bar



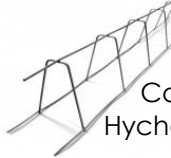
Steel Screed Chair



Grade Plate Spacer



Plastic Screed Chair



Continuous Hychair



Plastic Wheel Spacer

Tie Wire



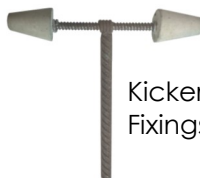
Bolt Box Cone



Line Spacer



Re-bar Protection Caps



Kickerless Fixings

Hoop Spacer



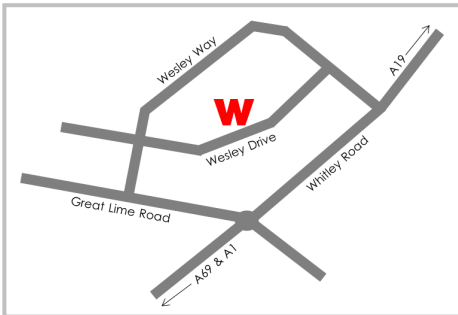
Concrete Block Spacer



Concrete Castle Spacer



# **WILLIAMSON CONSTRUCTION EQUIPMENT LIMITED**



## **NEWCASTLE DEPOT**

Unit 16  
Wesley Drive  
Benton Square Industrial Estate  
Newcastle upon Tyne  
NE12 9UP

**Tel: (0191) 215 0222**

**Fax: (0191) 266 4859**

## **CARLISLE DEPOT**

St. Ninian's Road  
Upperby  
Carlisle  
Cumbria  
CA2 4NE

**Tel: (01228) 514 814**

**Fax: (01228) 599 815**

**E: [hireandsales@wcelimited.co.uk](mailto:hireandsales@wcelimited.co.uk)**

 [twitter.com/WCELTD](https://twitter.com/WCELTD)

*Photographs contained in this brochure do not necessarily reflect best working practices under current legislation*